

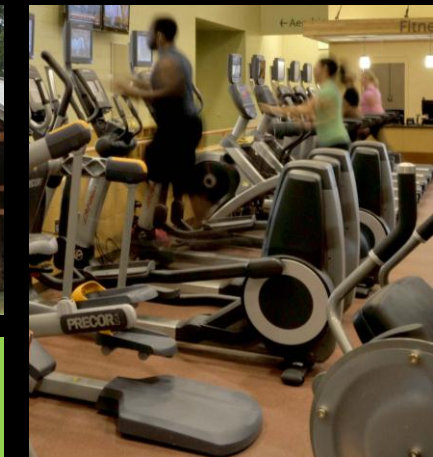
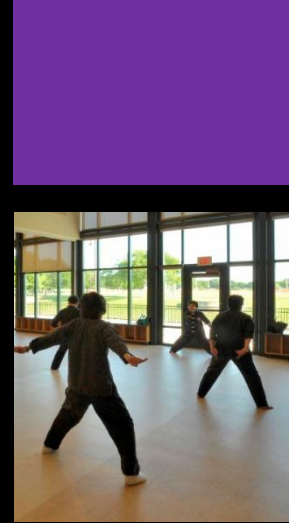


Community and Aquatic Center

Construction Documents

Workshop 1

November 18, 2013



Objectives of the Meeting:

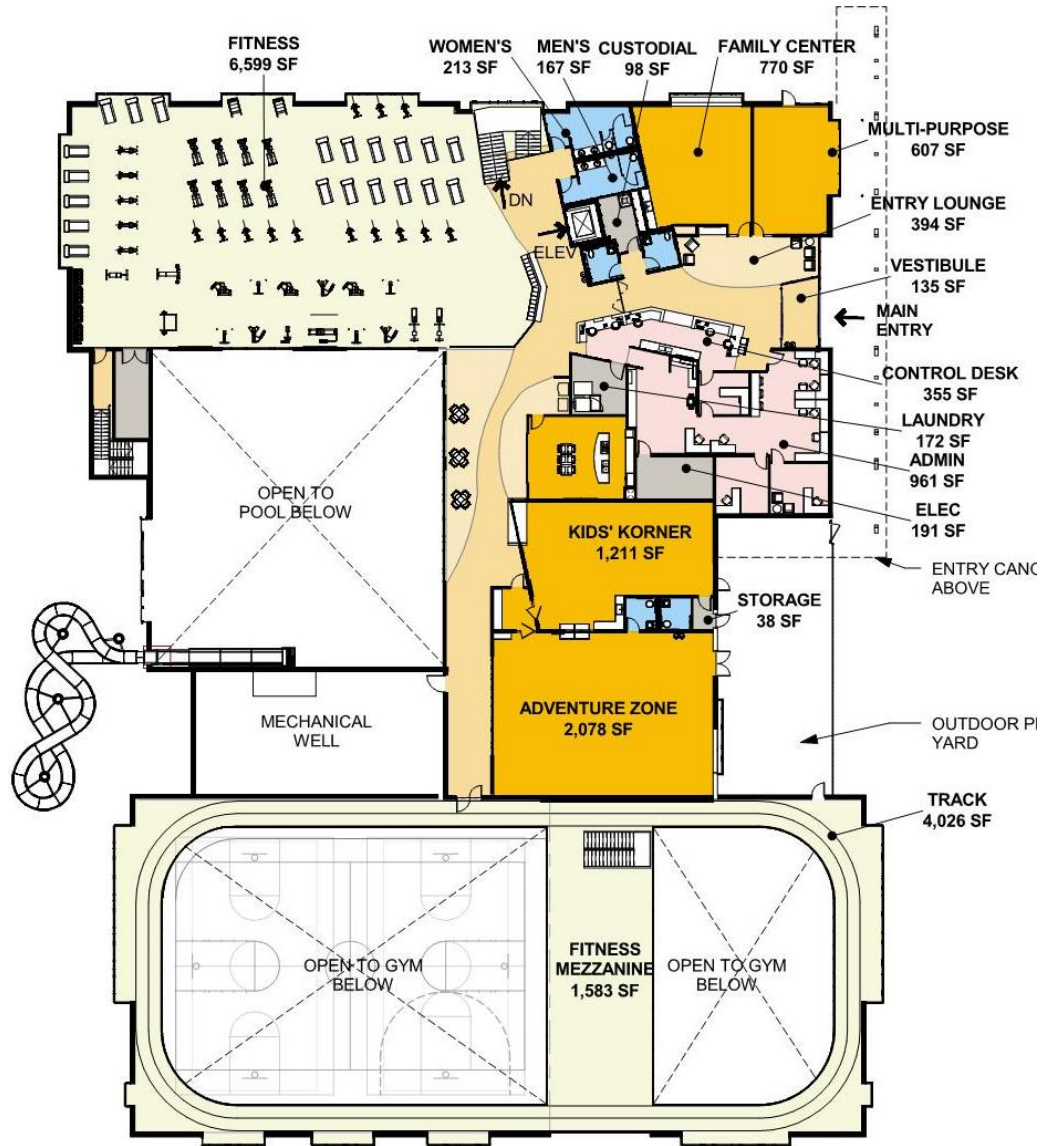
- Cost Estimate Update
- Design progress





Building Design

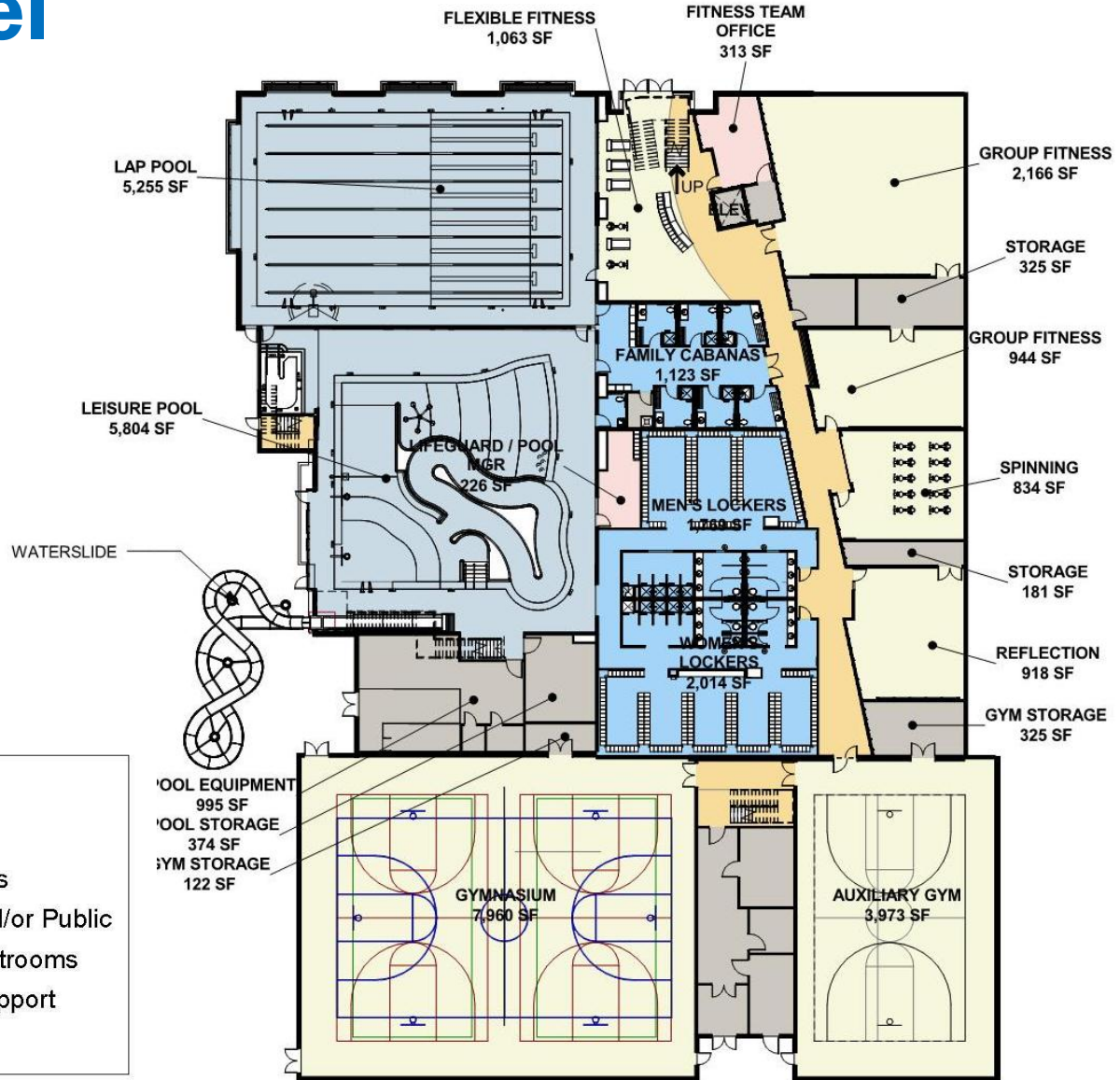
Upper Level



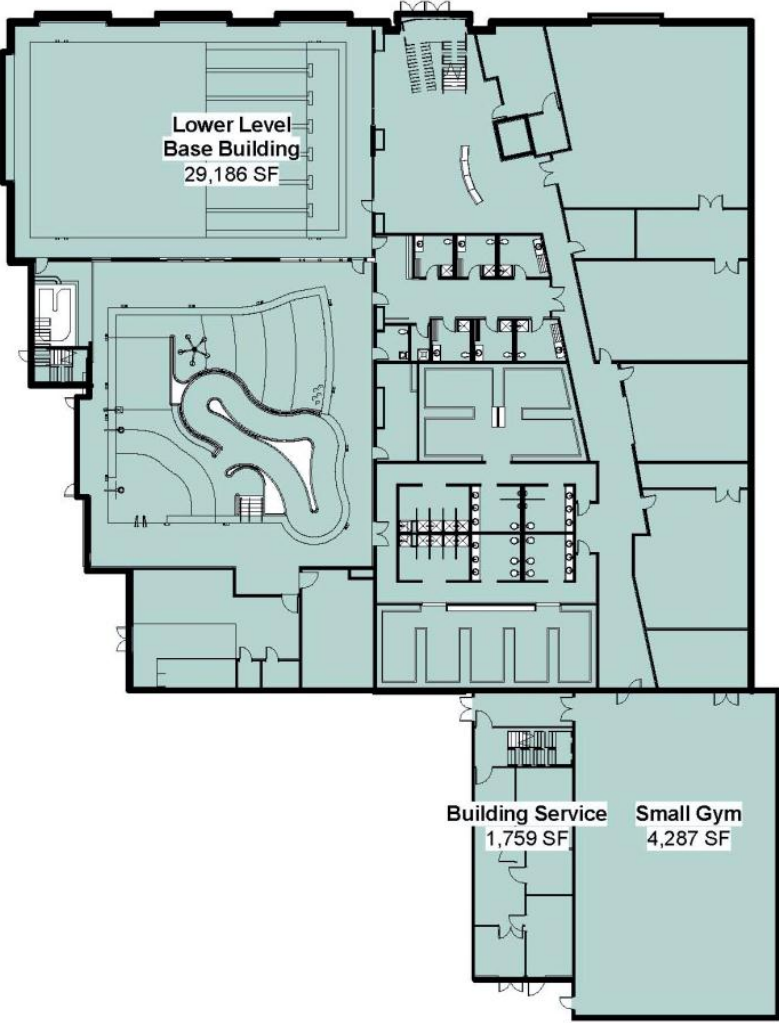
Room Legend

- Athletic Spaces
- Circulation and/or Public
- Community
- Lockers & Restrooms
- Lounge
- Non-Public/Support
- Office

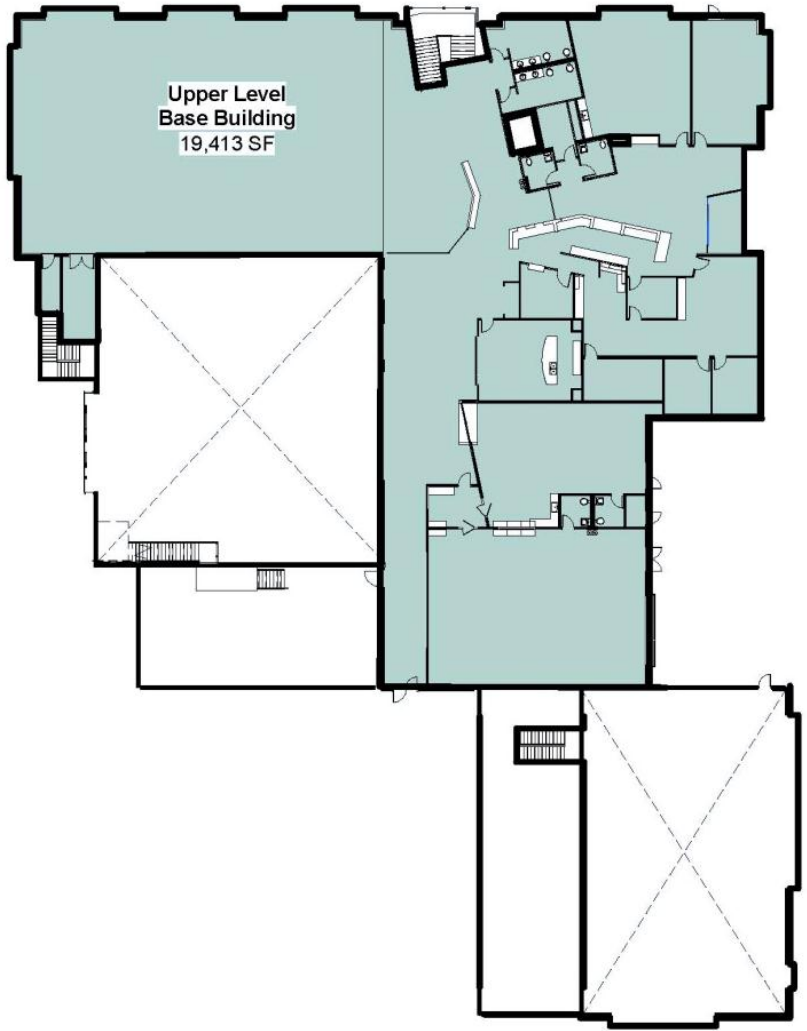
Lower Level



Base-Building 54,645 SF

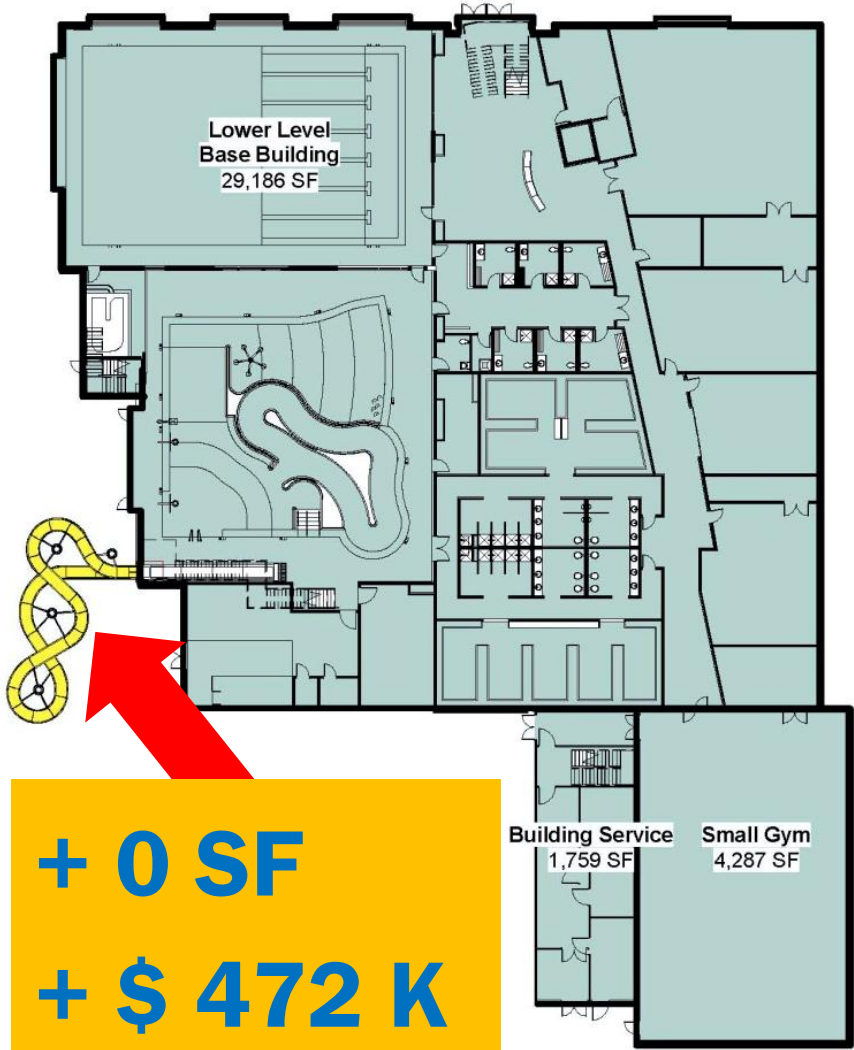


Lower Floor - Base Bid

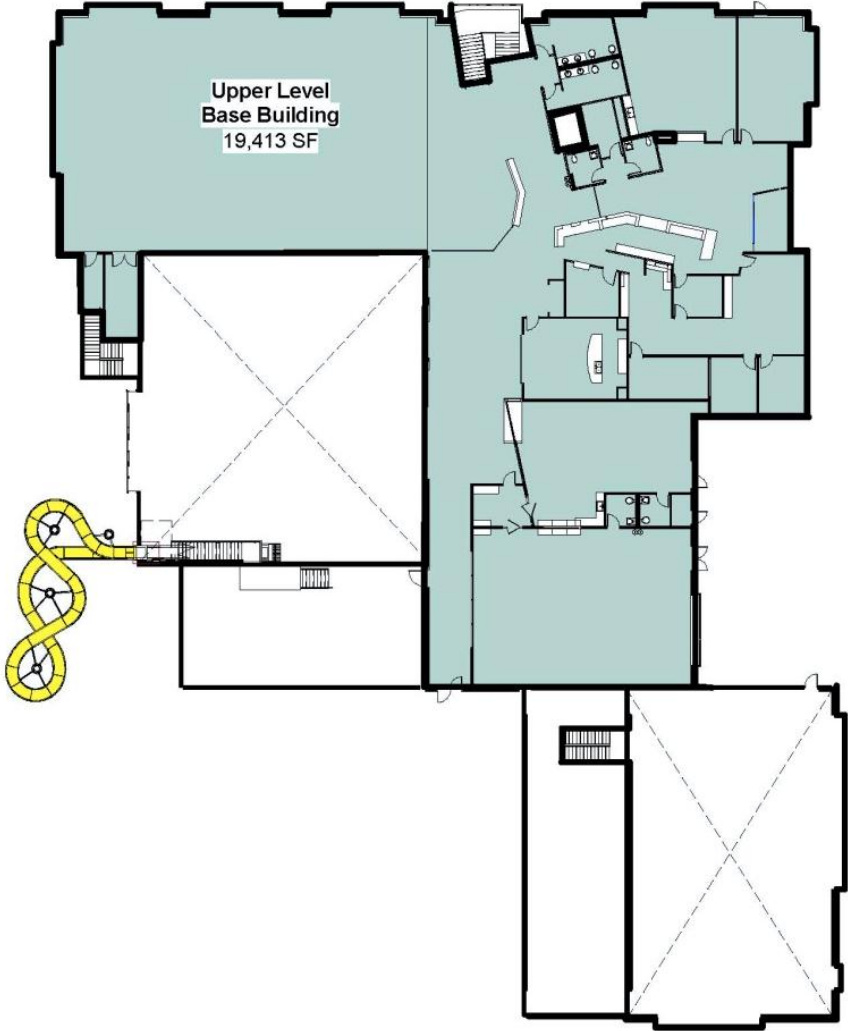


Upper Floor - Base Bid

Alternate #1 - Water Slide

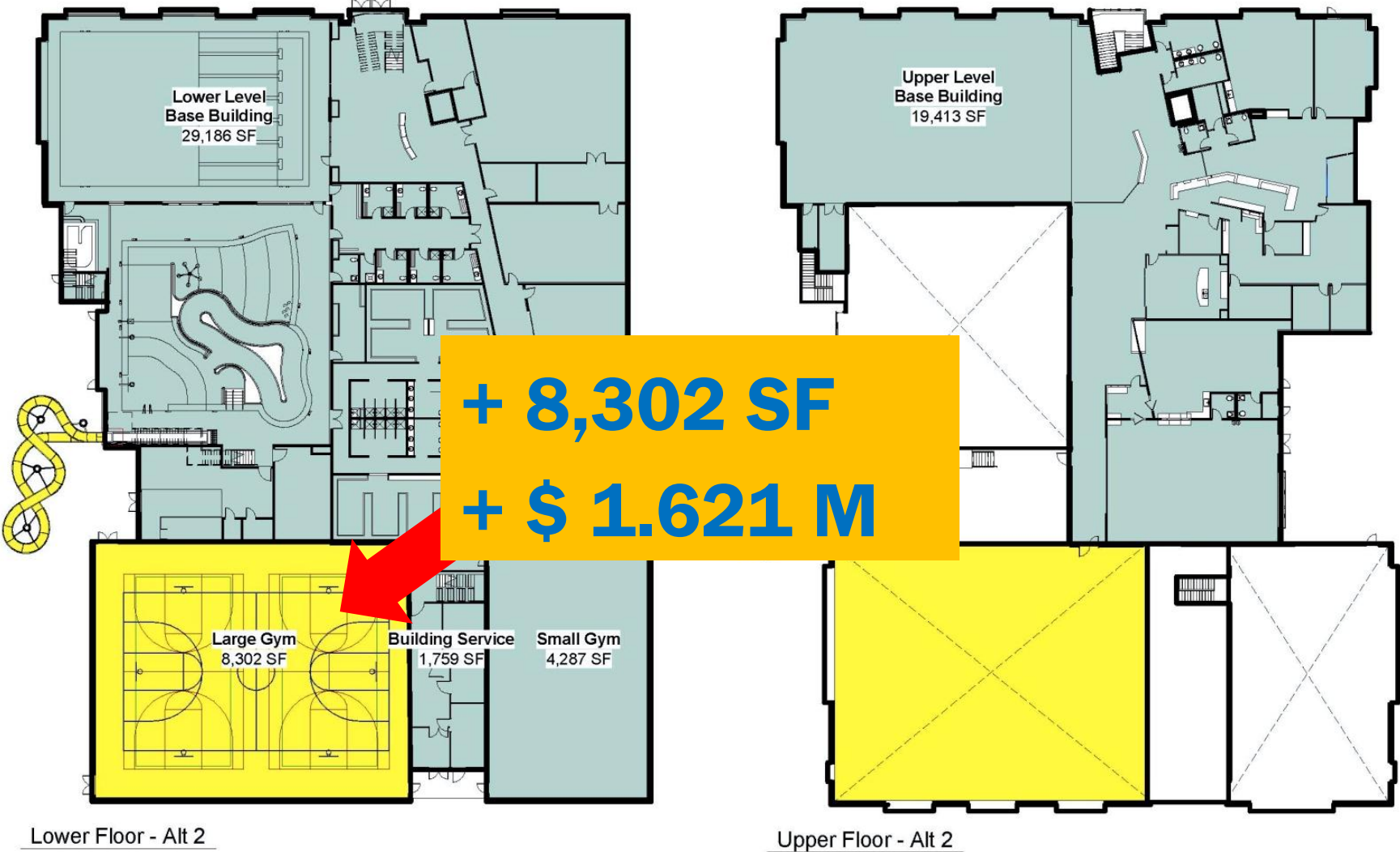


Lower Floor - Alt 1



Upper Floor - Alt 1

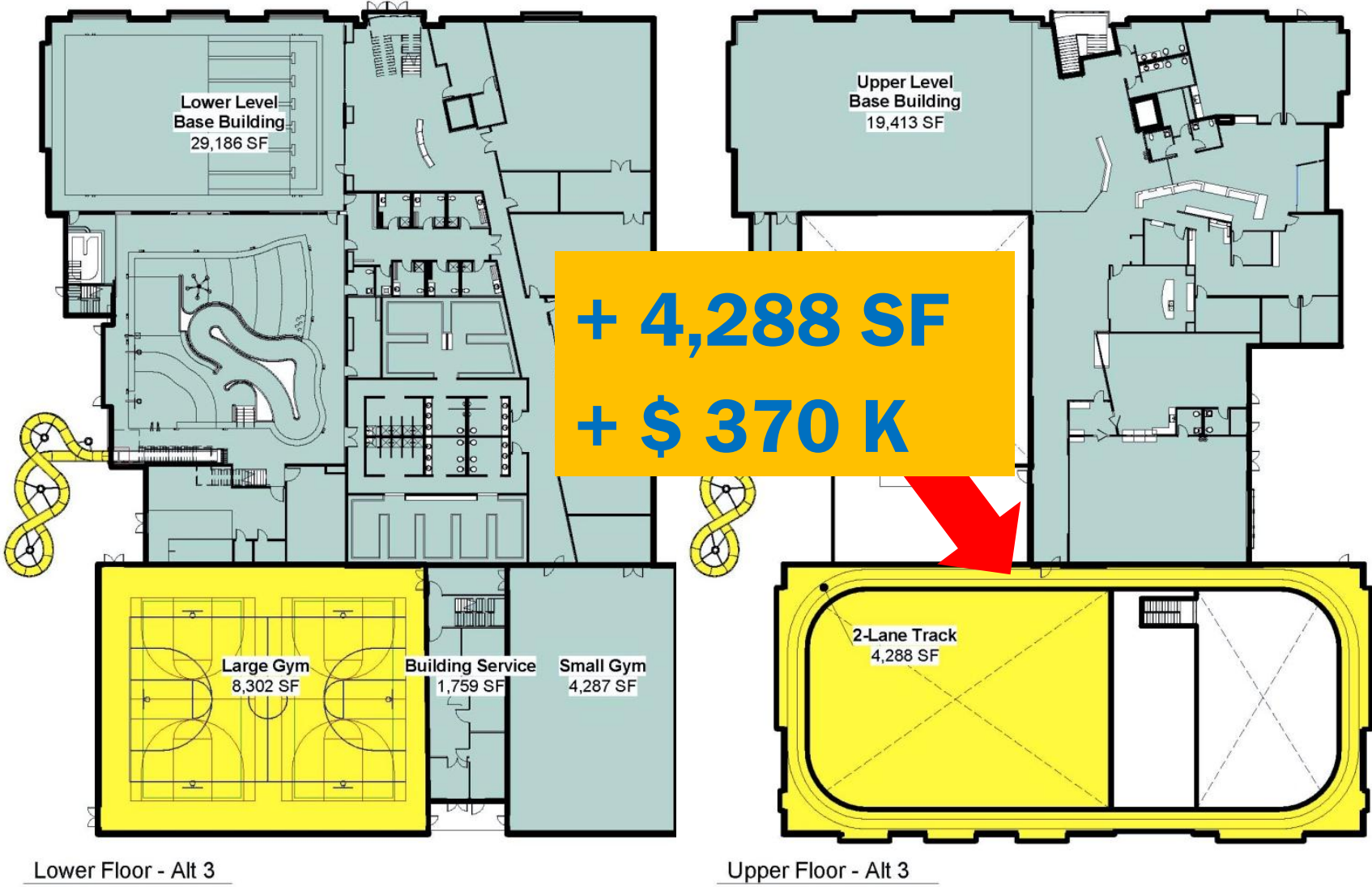
Alternate #2 - Large Gym



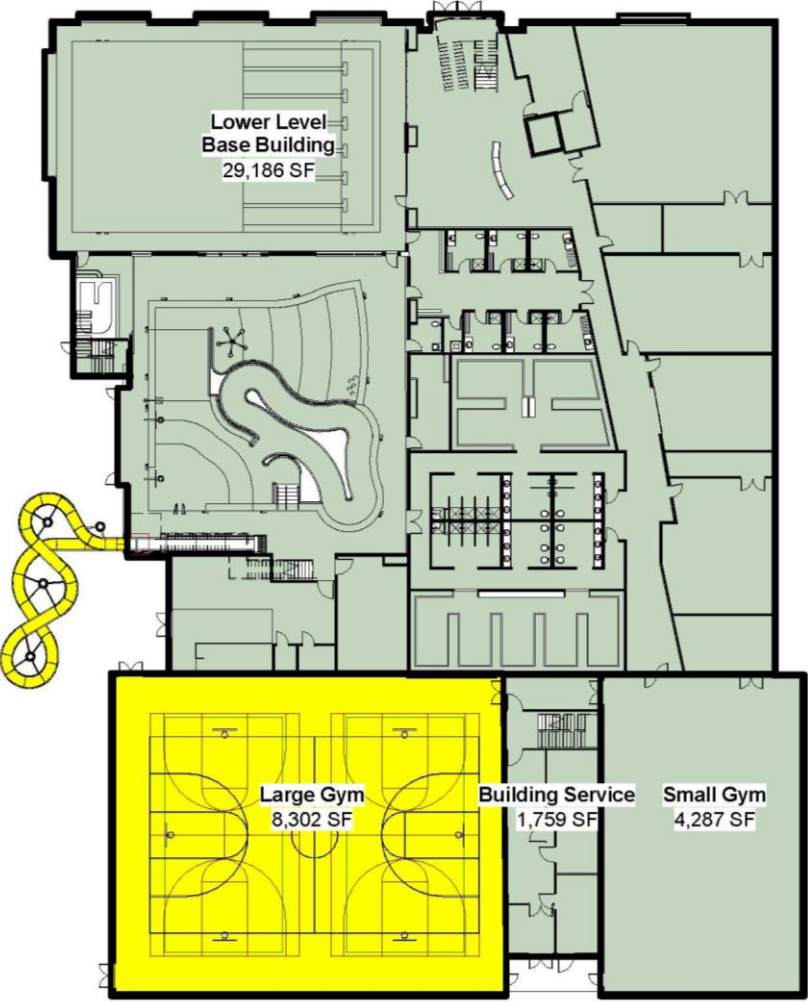
Lower Floor - Alt 2

Upper Floor - Alt 2

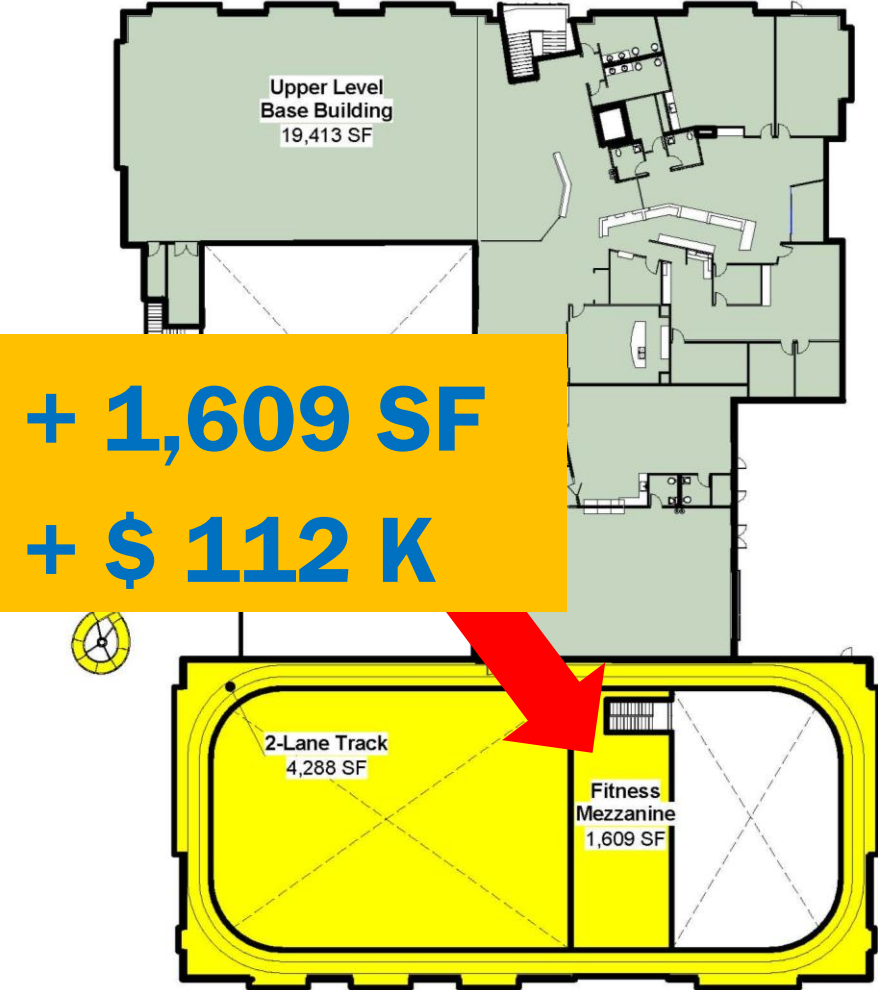
Alternate #3 - 2 Lane Jog Track



Alternate #4 - Fitness Mezzanine

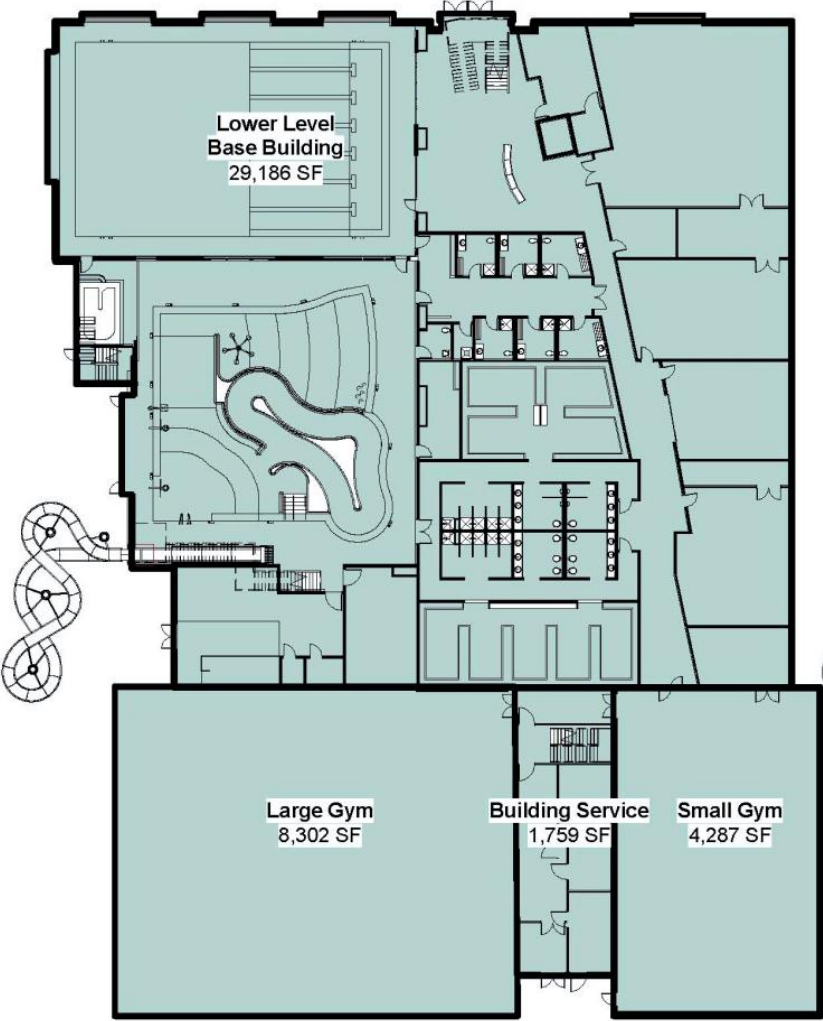


Lower Floor - Alt 4

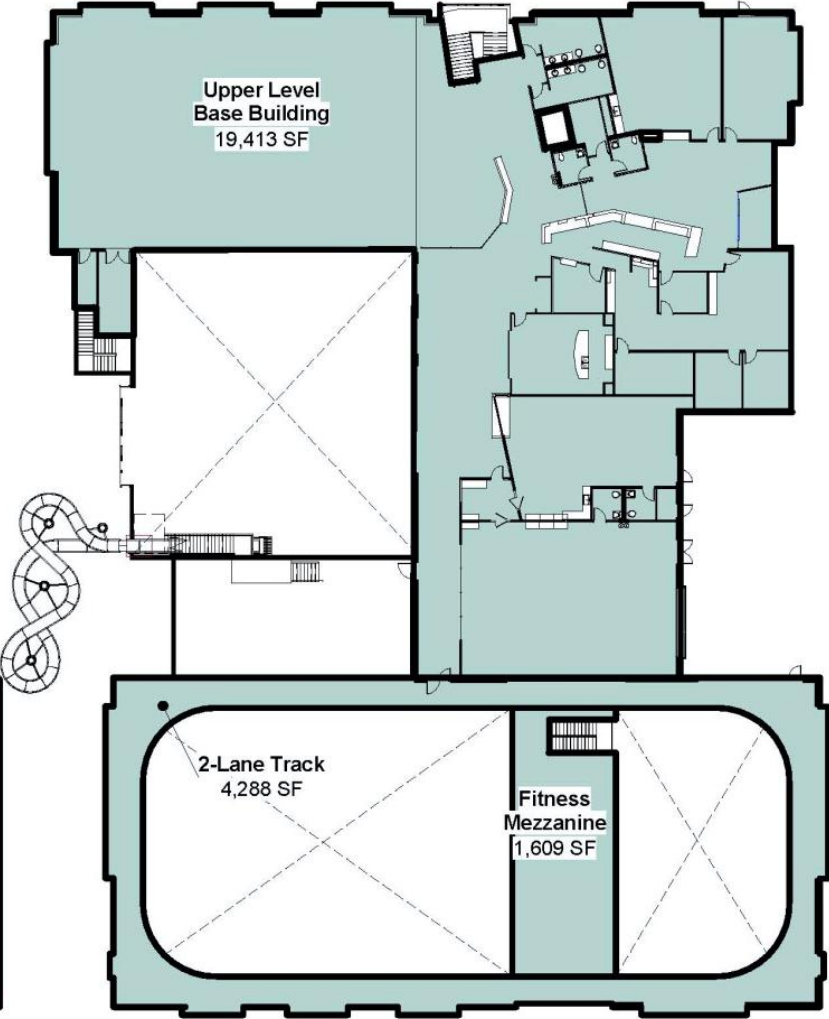


Upper Floor - Alt 4

Total Build-out 68,844 SF



LOWER FLOOR



UPPER FLOOR

PROJECT COSTS

• Base Bid:	\$31,927,839
• Alt #1, Water Slide:	\$ 472,172
• Alt #2, Large Gym:	\$ 1,621,224
• Alt #3, Jog Track:	\$ 370,678
• Alt #4, Fitness Mezzanine:	\$ 112,487
<hr/>	
• TOTAL	\$34,504,400

60% Design Estimate

	60% Design Estimate	
	Small Gym in Base	
Base Bid	Area	Cost
Building Cost	54,645	\$ 15,459,562
Structured Parking Cost		\$ 3,919,563
Site Cost		\$ 4,388,280
Construction Costs		\$ 23,767,405
9.5% Sales Tax		\$ 2,257,903
Soft Costs		\$ 3,000,000
Sub Total		\$ 29,025,308
10% Contingency		\$ 2,902,531
Total Cost		\$ 31,927,839
Alternates w/ WSST and Contingency		
Water Slide	-	\$ 472,172
Small Gym		Included
Large Gym	8,302	\$ 1,621,224
Track--2 Lane	4,288	\$ 370,678
Fitness Mezzanine	1,609	\$ 112,487
Project Total with all Alternates	68,844	\$ 34,504,400



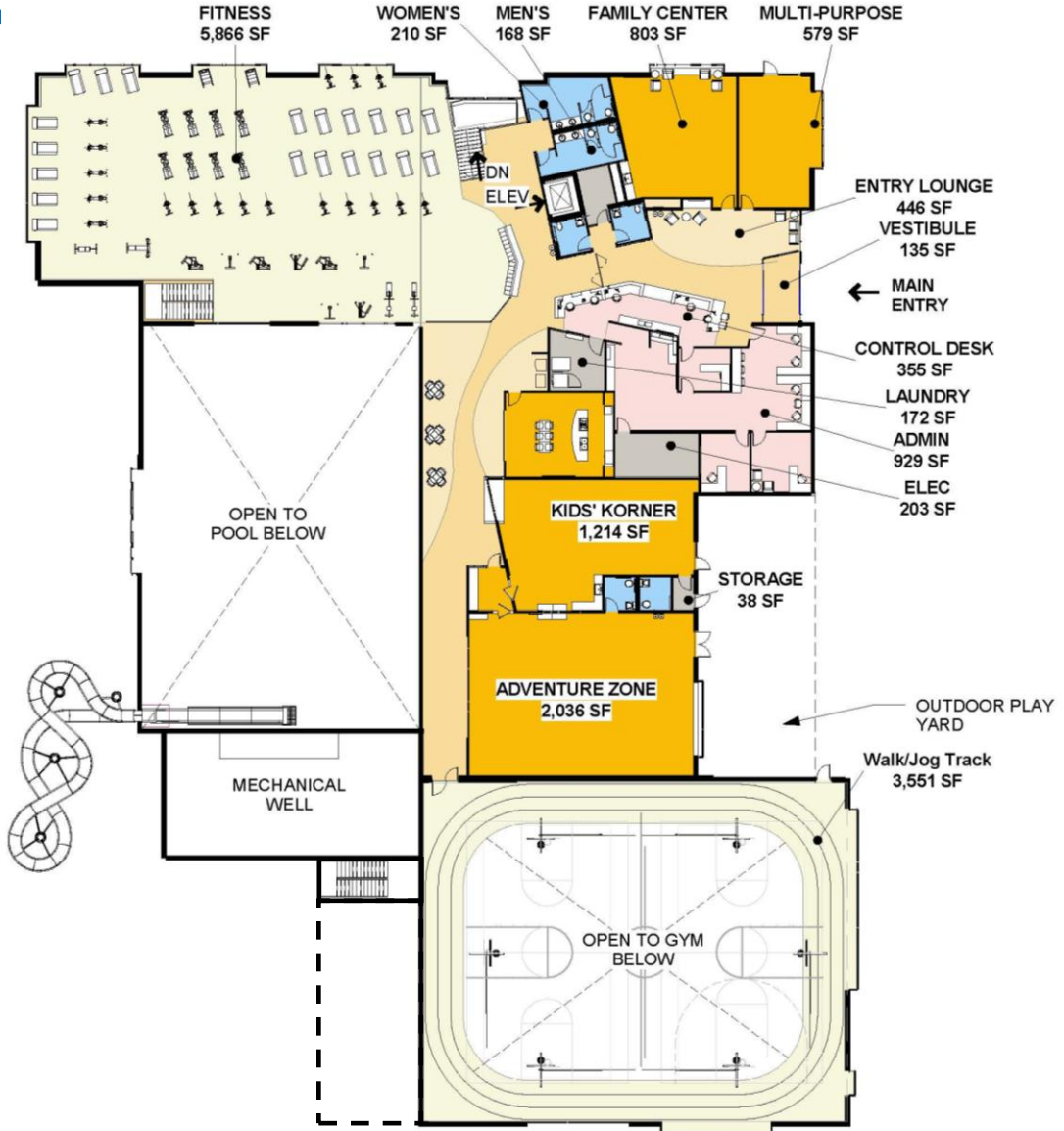
Previous vs. Current Estimate Update

	30% Design Estimate		60% Design Estimate	
	Large Gym in Base		Small Gym in Base	
Base Bid	Area	Cost	Area	Cost
Building Cost	60,280	\$ 17,180,492	54,645	\$ 15,459,562
Structured Parking Cost		\$ 4,113,471		\$ 3,919,563
Site Cost		\$ 4,715,073		\$ 4,388,280
Construction Costs		\$ 26,009,036		\$ 23,767,405
9.5% Sales Tax		\$ 2,470,858		\$ 2,257,903
Soft Costs		\$ 3,000,000		\$ 3,000,000
Sub Total		\$ 31,479,894		\$ 29,025,308
10% Contingency		\$ 3,147,989		\$ 2,902,531
Total Cost		\$ 34,627,884		\$ 31,927,839
Alternates w/ WSST and Contingency				
Water Slide	-	Included	-	\$ 472,172
Small Gym	4,374	\$ 824,647		Included
Large Gym		Included	8,302	\$ 1,621,224
Track--2 Lane	2,870	Included in Gym	4,288	\$ 370,678
Fitness Mezzanine	-		1,609	\$ 112,487
Project Total with all Alternates	67,524	\$ 35,452,531	68,844	\$ 34,504,400



Reduced Scope Study

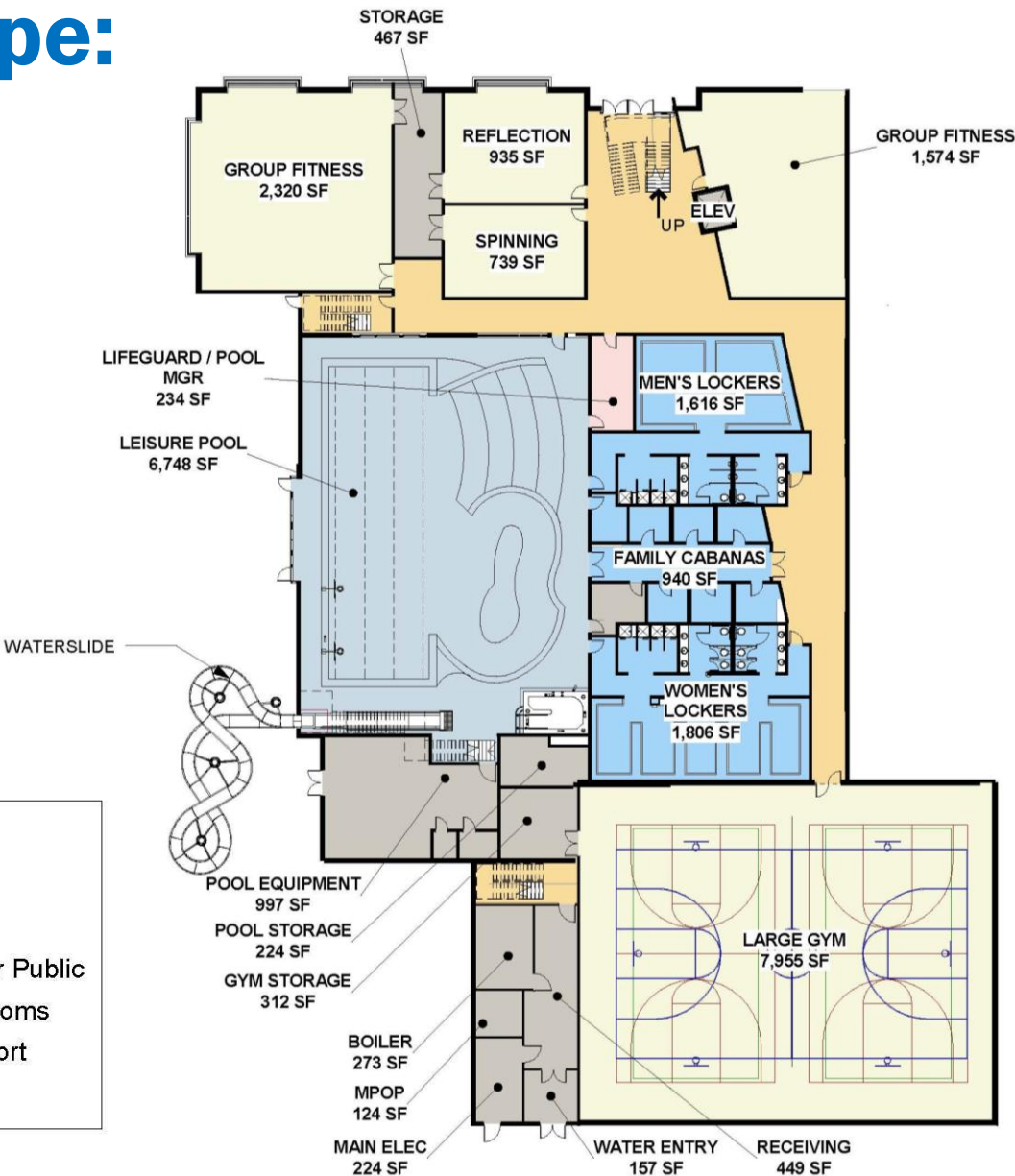
Reduced Scope: Upper Level



Room Legend

- Athletic Spaces
- Circulation and/or Public
- Community
- Lockers & Restrooms
- Lounge
- Non-Public/Support
- Office

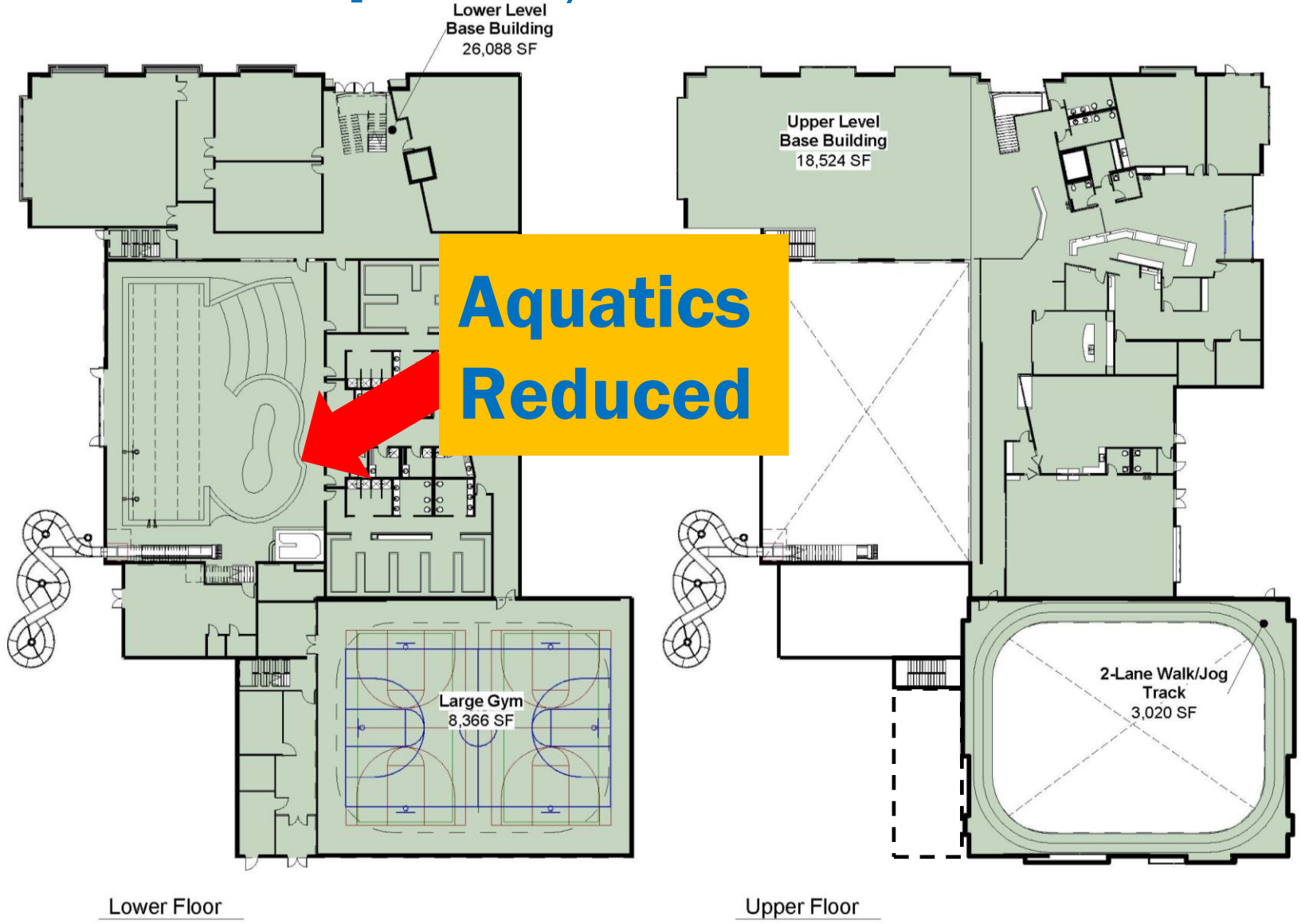
Reduced Scope: Lower Level



Room Legend

- Aquatics
- Athletic Spaces
- Circulation and/or Public
- Lockers & Restrooms
- Non-Public/Support
- Office

Reduced Scope 55,997 SF



Reduced Scope Estimate

Base Bid	Area	Cost
Building Cost	55,997	\$ 14,434,823
Structured Parking Cost		\$ 3,919,563
Site Cost		\$ 4,388,280
Construction Costs		\$ 22,742,666
9.5% Sales Tax		\$ 2,160,553
Soft Costs		\$ 3,000,000
Sub Total		\$ 27,903,219
10% Contingency		\$ 2,790,322
Total Cost		\$ 30,693,541



Timeline:

Schematic Design
(complete)

April to June 2013

Design Development
(complete)

June to October 2013

Construction Docs.
(in progress)

Nov 2013 to March 2014

Permit Review

January to April 2014

Bidding

April to May 2014

Contract Award

May to June 2014

Construction

June 2014 to Dec 2015





Thank You!