

VISION STATEMENT



The Big Rock Parks and Beaton Hill Park system serves as an oasis of nature in the city. As such, the master plans for each park should:

- Continue to be the **place of respite**, contemplation, and exploration of the natural environment it is today, protected for future generations.
- **Connect, educate, and inspire** people of all ages and abilities to discover more about each other and our surroundings.
- Provide **safe access to everyone** of all abilities to the amazing places and experiences throughout the parks.
- Allow everyone the **flexibility** to be active or passive in how they choose to recreate, providing opportunities for both in a way that respects and fits into the context of the site.

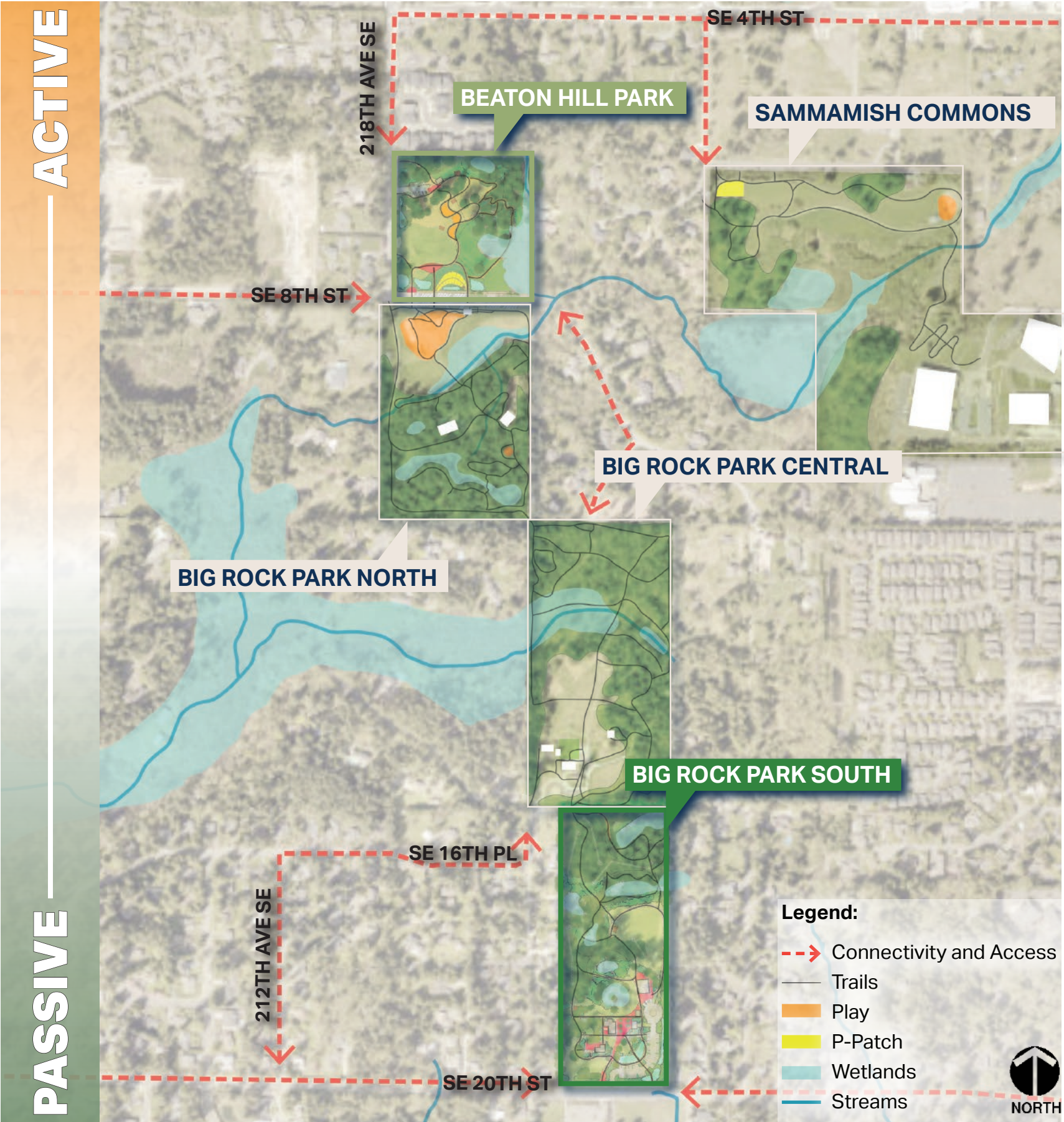


Beaton Hill Park



Big Rock Park South

CONCEPT 1 - GRADIENT OF ACTIVITIES

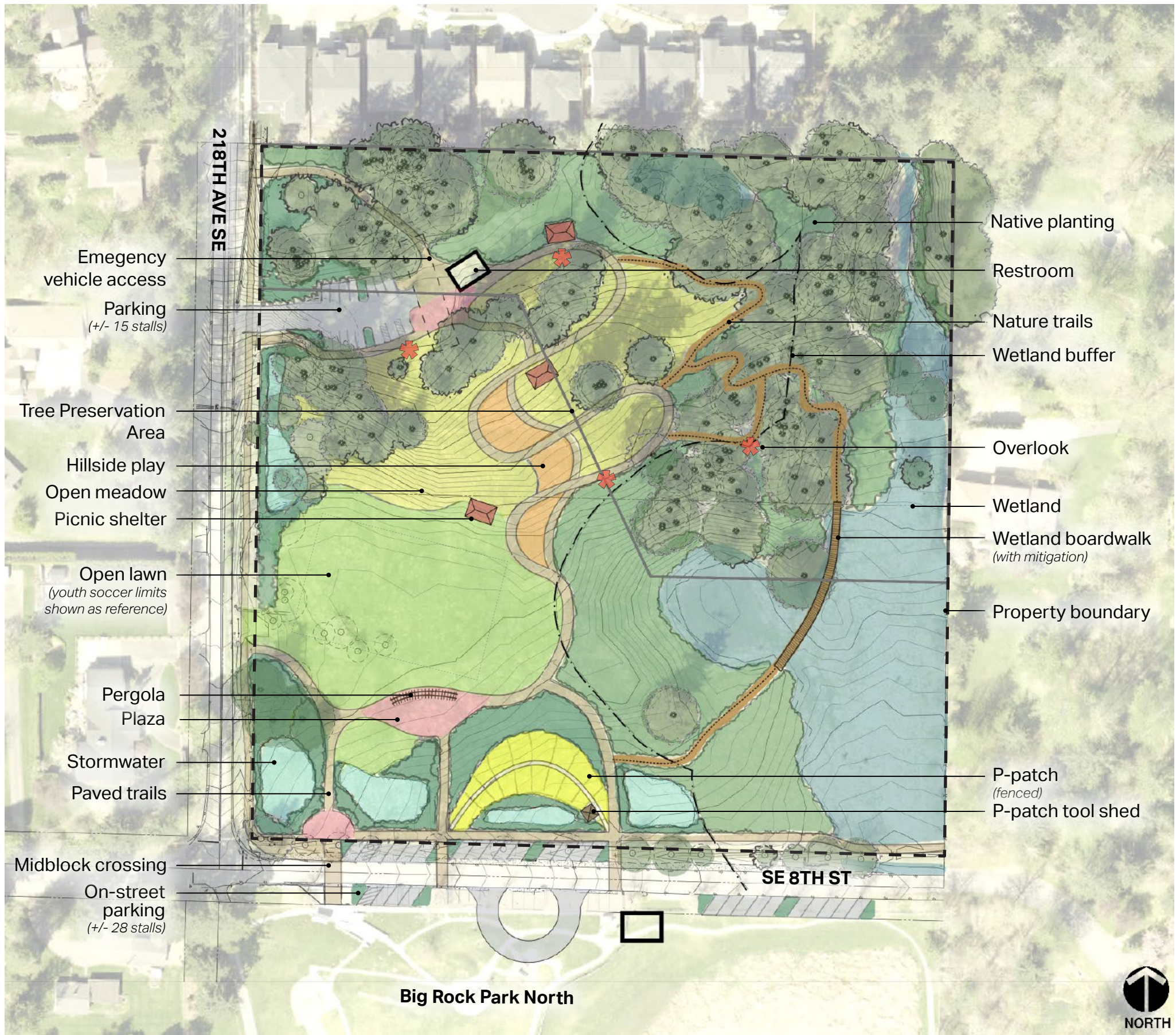


The **Gradient of Activities** concept establishes an interconnected passive to active framework across the Big Rock/Beaton Hill Park system. Calm and passive engagement with nature through garden walks, trails, and picnic areas is the focus of Big Rock Park South. This continues through the existing Big Rock Park system leading up to the more active nature play in Big Rock Park North.

Beaton Hill Park anchors the active end of the gradient with a flexible open field and hillside play area, while still providing for more passive activities and trails.

Educational elements are integrated throughout the trails focusing on ecological features of the site, park history, and/or cultural interest.

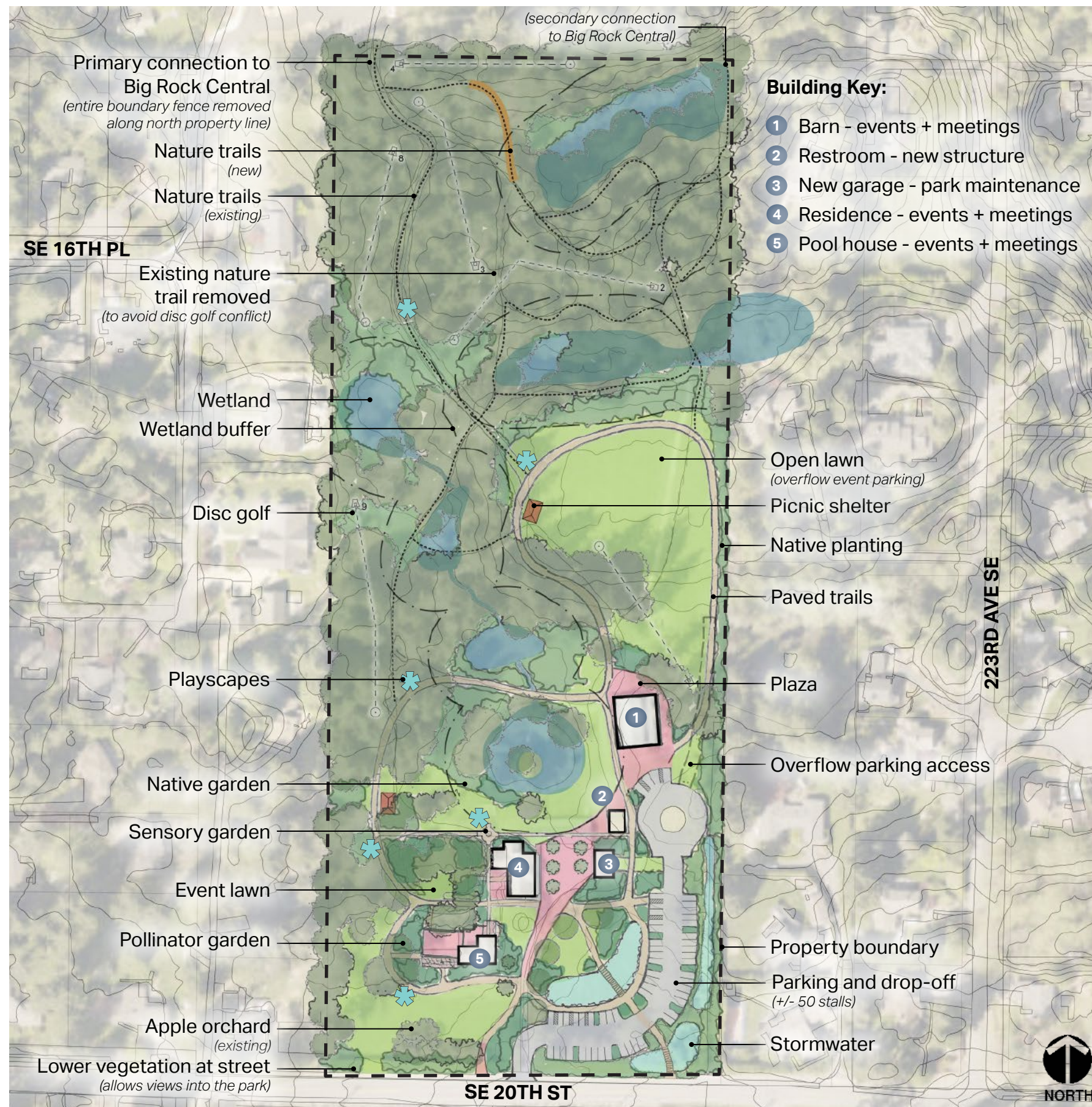




Gradient of Activities

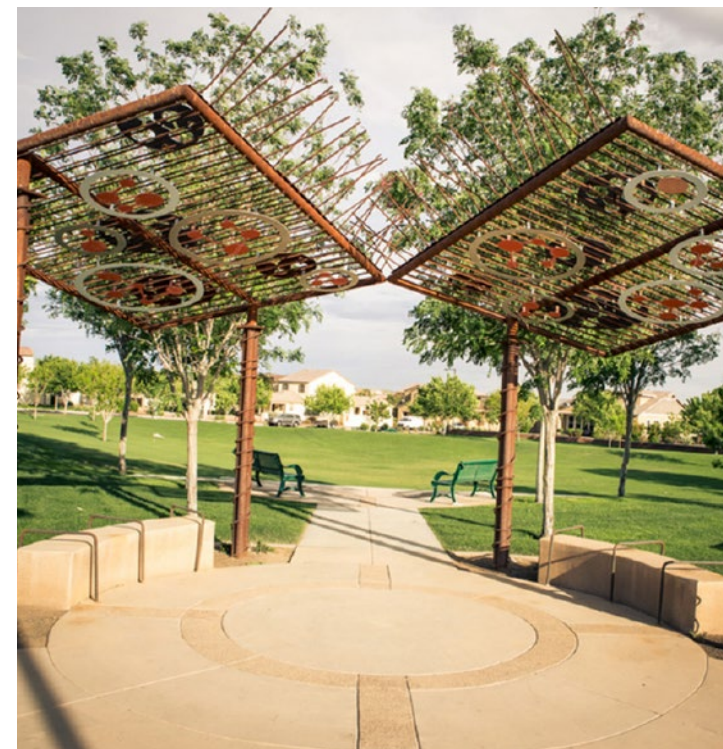
- An open lawn area is provided, sized for a variety of activities, such as youth soccer, ultimate frisbee, informal baseball, lawn games, etc.
- The hillside play utilizes the existing topography to create unique play features while maintaining accessibility for all.
- The P-Patch allows for the community to actively engage in the park and is a connection to the site's farming history.
- Stormwater supports natural drainage practices, integrated into landscape areas.
- Plazas define entry and create open gathering areas.





Gradient of Activities

- Opportunities for quiet and calm engagement are integrated with nature. Trails allow visitors to wander through gardens and wetlands, learning about the site's history and natural ecology.
- Plazas provide a clear entrance into the park, create a central gathering space, and take advantage of open views to the pond and garden areas.
- Playscapes and a disc golf course are integrated along the trails creating interest for all ages to engage more directly with the surrounding natural systems.
- Disc golf continues into Big Rock Central to provide a full 9-hole course without impacting wetlands and their associated buffers.
- The old garage is removed in this concept, reducing the impact to the wetland and allowing greater variation in the site grading to accommodate and channel stormwater naturally.



CONCEPT 2 - WHIMSY AND DISCOVERY



This concept weaves elements of **whimsy and discovery** throughout the Big Rock/Beaton Hill Park system. Playscapes and art are used as whimsical elements to celebrate nature and the distinct legacy of each park. These elements appeal to visitors of all ages and are arranged in a way that evokes the same whimsy and discovery that exists in many of the features of the site today.

Elements and activities are more dispersed throughout the system with the trails as the connecting thread between all the different elements of the parks.

Educational elements are integrated throughout the trails with stories, interpretive signs for natural areas, and as part of natural gardens.

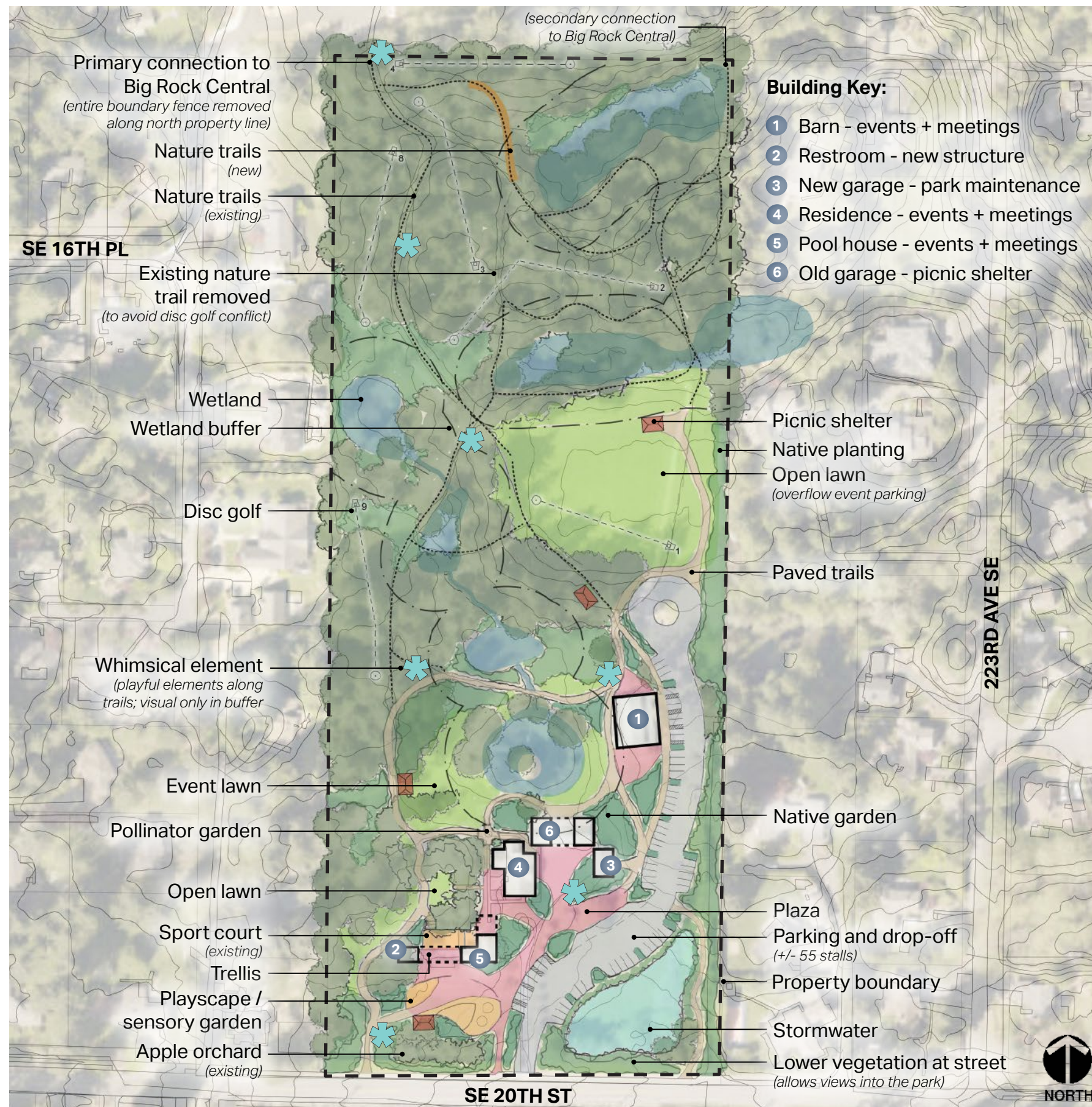




Whimsy and Discovery

- The playground includes more active and universal play elements, located within easy access to the existing nature play at Big Rock Park North.
- Informal whimsical play occurs along the trails to encourage kids of all ages to explore beyond the traditional play structures.
- Dedicated pickleball courts provide active play not currently available in city's park system.
- The topography of the site creates an ideal location for an informal amphitheater which can be used for small theatrical, musical, or educational events.
- Plazas help define entrances to the park and provide areas for seating or community gathering.



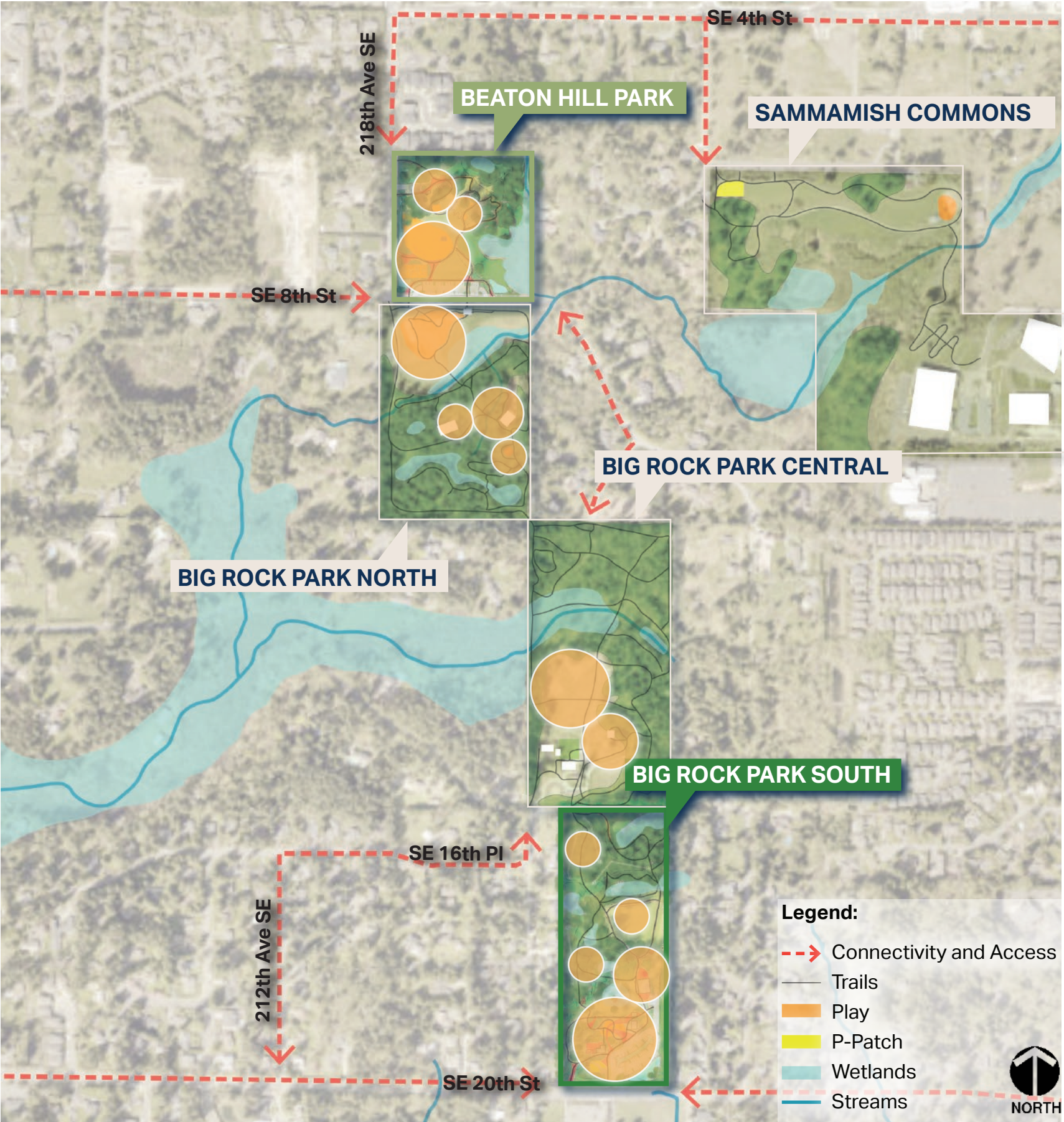


Whimsy and Discovery

- The design for Big Rock Park South focuses on enhancing the existing features and integrating elements of discovery that lead people of all ages through the park.
- Whimsical sculptures, natural features, and playful elements are woven into the gardens and trails and continue through the existing Big Rock Park Central and North as a defining feature connecting all the parks in this system.
- All of the structures remain and are repurposed for a variety of programs. The old garage is largely reconstructed to transform it into an open picnic area.
- Disc golf is incorporated along the trails, continuing into Big Rock Central to provide a full 9-hole course without impacting wetlands and their associated buffers.



CONCEPT 3 - PLAYFUL SPACE FOR EVERYONE



This concept explores opportunities for **playful spaces for everyone** including all ages, abilities, and interests. Each park has its own program that adds to the variety of play throughout the park system. Play extends to the four-legged family members with an optional dog park in this concept.

Education is integrated along trails and provides passive recreation, focusing on wildlife viewing and habitat features throughout the park (where nature’s creatures play), as well as historical or cultural interests.

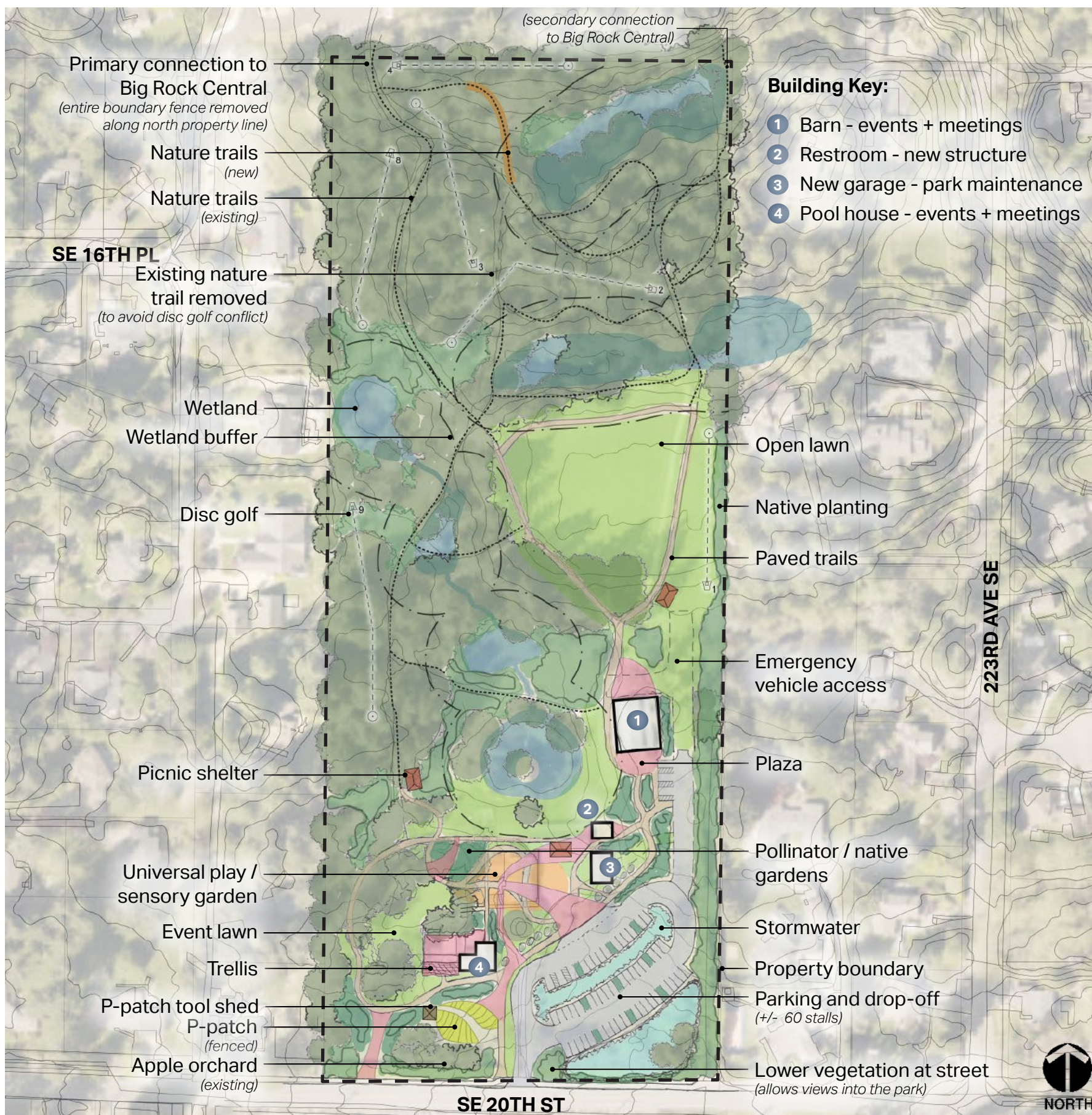




Playful Space for Everyone

- The design for Beaton Hill focuses on playful fun for the whole family including play for the four-legged family members in the dog park.
- Play for kids is integrated into the trail system with play nodes added throughout the site to discover, explore, and challenge kids to interact with the surrounding environment.
- Dedicated pickleball courts provide active play not currently available in city's park system, with an option for league play with four courts.
- Plazas help define entrances to the park and provide areas for seating or community gathering.





Playful Space for Everyone

- The design for Big Rock Park South includes a universal play area that considers all abilities and ages. The universal play spills into and integrates with picnic areas, sensory gardens, and small gathering spaces for a more holistic and multi-use character. This ensures the overall character doesn't feel like a single dedicated use of the space.
- The P-Patch allows an additional opportunity for the community to actively engage in the park.
- The existing old garage and residence are removed to accommodate the universal play and integrated open space areas.
- Disc golf is incorporated along the trails, continuing into Big Rock Central to provide a full 9-hole course without impacting wetlands and their associated buffers.

