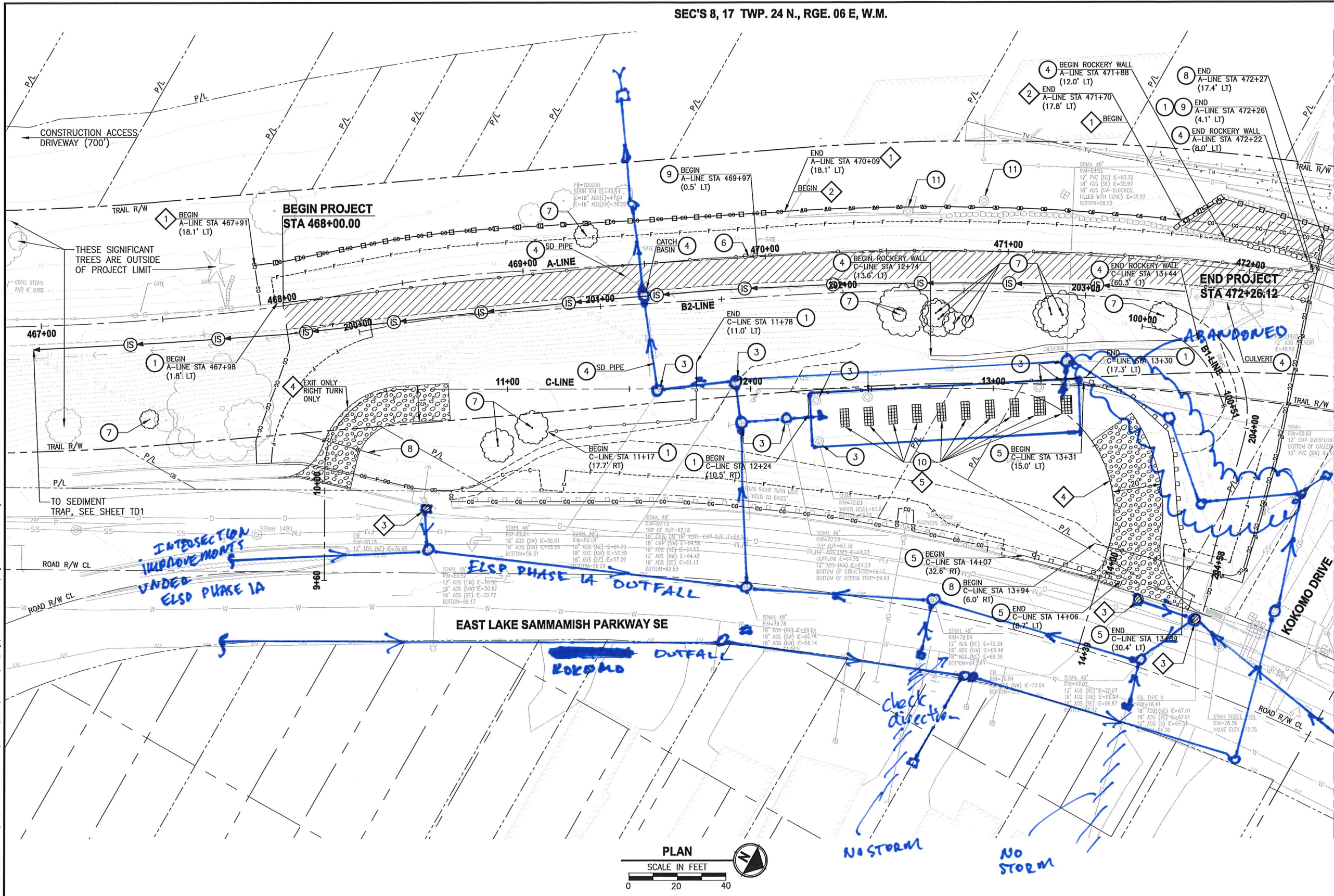


SEC'S 8, 17 TWP. 24 N., RGE. 06 E, W.M.



- SITE PREPARATION NOTES:**
- 1 REMOVE AND SALVAGE CHAIN LINK FENCE.
 - 2 REMOVE AND DISPOSE STAIR.
 - 3 ADJUST MANHOLE TO FINISHED GRADE.
 - 4 REMOVAL OF STRUCTURE AND OBSTRUCTION.
 - 5 REMOVE AND SALVAGE GUARDRAILS.
 - 6 REMOVE AND SALVAGE CHAIN LINK GATE.
 - 7 REMOVE TREE OR HEDGE WITHIN CLEARING AND GRUBBING LIMITS.
 - 8 INSTALL TEMPORARY SAFETY FENCE. SEE SPECIAL PROVISIONS.
 - 9 REMOVE AND SALVAGE WOOD BOARD FENCE.
 - 10 ADJUST METAL GRATE TO FINISHED GRADE.
 - 11 PRESERVE AND PROTECT SEWER LINE.

- TESC NOTES:**
- 1 SILT FENCE PER WSDOT STANDARD DETAIL 1-30.15-02.
 - 2 TRIANGLE SILT DIKE.
 - 3 STORM DRAIN INLET PROTECTION, PER WSDOT STANDARD DETAIL 1-40.20-00.
 - 4 STABILIZED CONSTRUCTION ENTRANCE, PER WSDOT STANDARD DETAIL 1-80.10-01.
 - 5 METAL GRATE INLET PROTECTION, SEE DETAIL SHEET TD1.
 - 6 TEMPORARY BYPASS.

- LEGEND:**
- REMOVE EXISTING GRAVEL SURFACE
 - PAVEMENT EXCAVATION LIMIT
 - INLET PROTECTION
 - STABILIZED CONSTRUCTION ENTRANCE
 - NPDES CONSTRUCTION STORMWATER DISCHARGE MONITORING POINT
 - INTERCEPTOR SWALE

CITY OF SAMMAMISH APPROVAL

City Engineer	Date
Community Development	Date

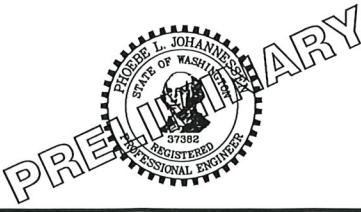
NOT FOR CONSTRUCTION

PLOTTED BY: purganut DATE: Tuesday, October 11, 2016 7:48:49 PM
 FILE PATH: U:\PDS\Projects\Clients\1521-KingCo\554-1521-075-ELSD\995vea\cadd\Phase 21\T03\Drawg

REVISIONS	DATE	BY	DESIGNED
			J. JUN
			B. PURGANAN
			P. JOHANNESSEN
			Y. HO

ONE INCH AT FULL SCALE.
IF NOT, SCALE ACCORDINGLY

FILE NAME: BL1521075P21T03SP-01
JOB No. 554-1521-075 P21T03
DATE: OCTOBER 2016



Parametrix
ENGINEERING, PLANNING, ENVIRONMENTAL SCIENCES

719 2ND AVENUE, SUITE 200 | SEATTLE, WA 98104
P 206.394.3700
WWW.PARAMETRIX.COM

PROJECT NAME
**EAST LAKE SAMMAMISH
MASTER PLAN TRAIL
INGLEWOOD HILL ROAD PARKING LOT**
SAMMAMISH, WA

TESC/SITE PREPARATION PLAN

SHEET NO.
5 OF 27
SP1