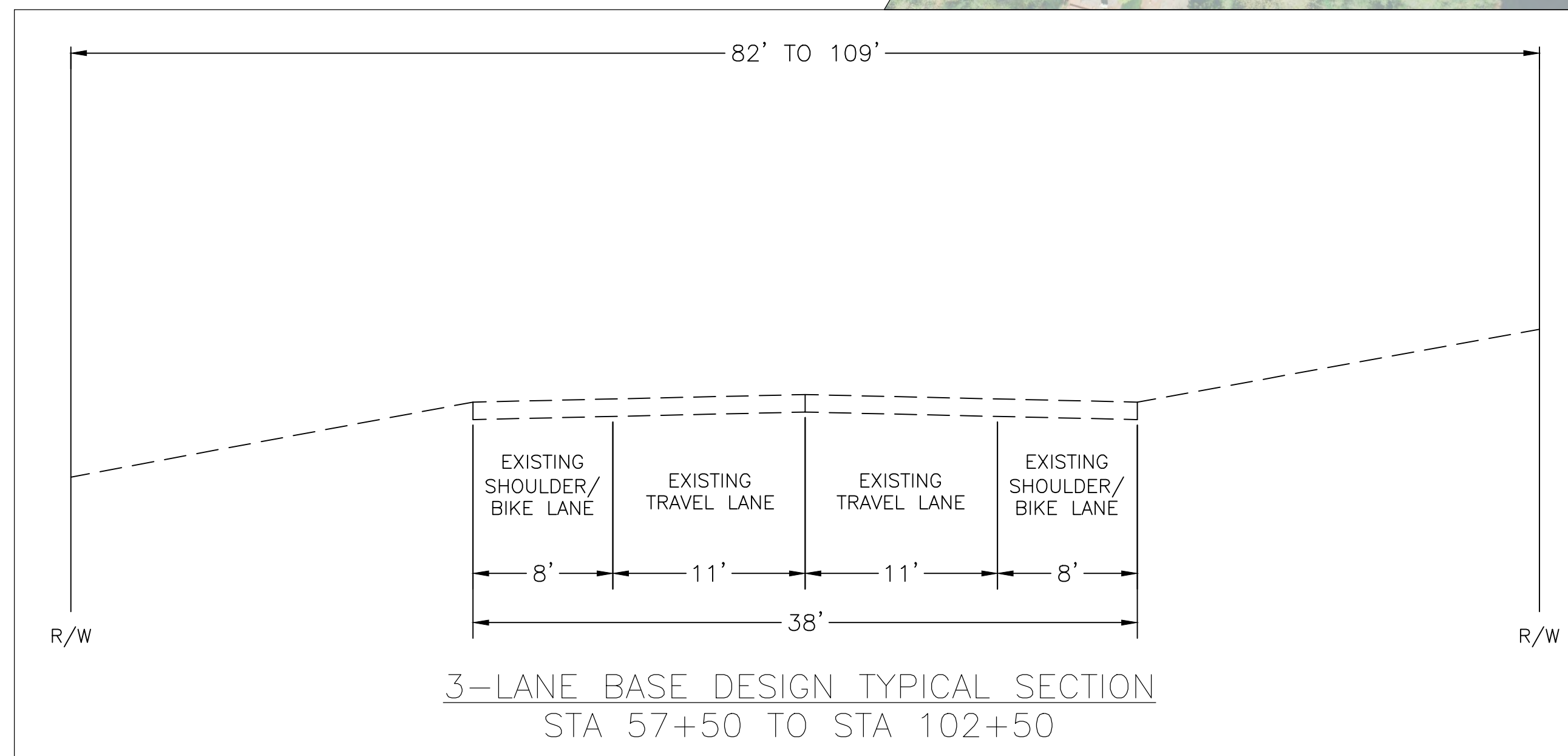
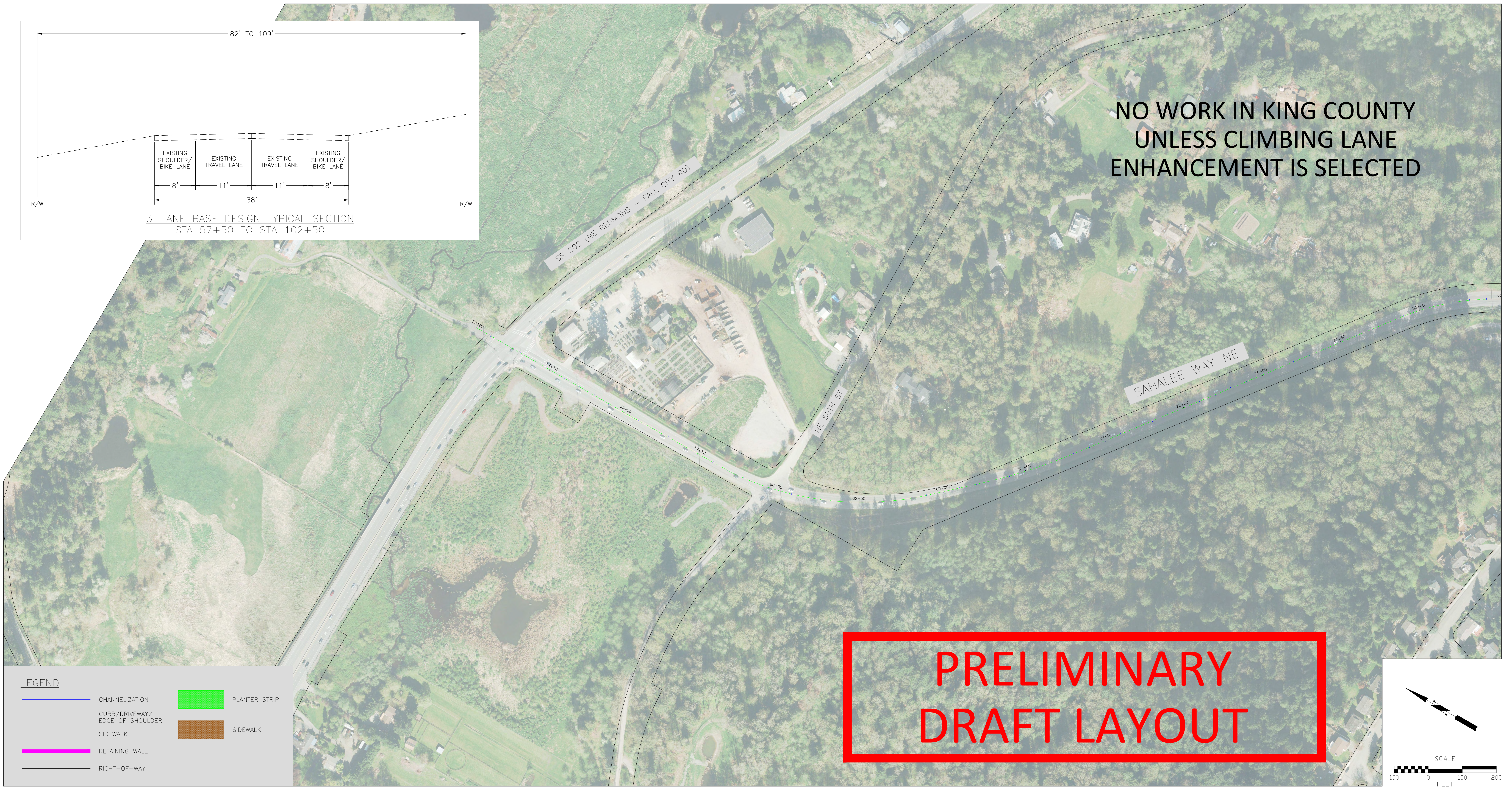


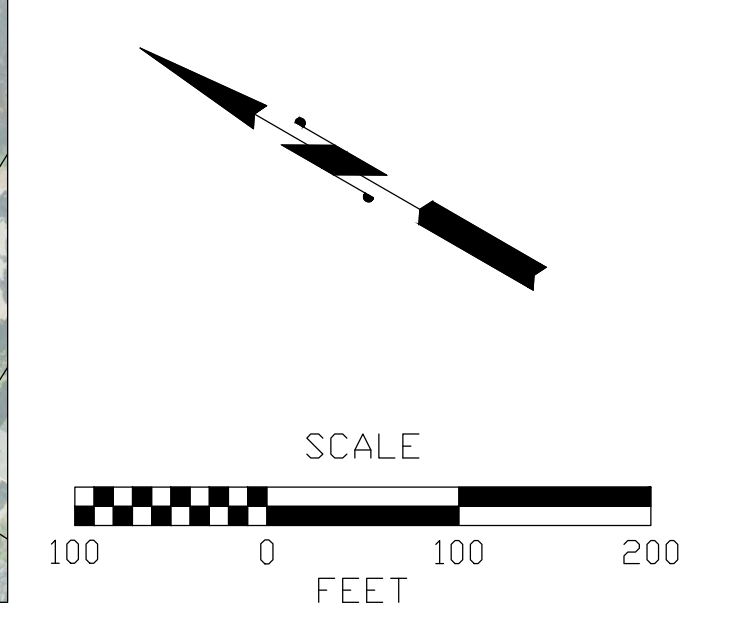
Sep 22, 2015 - 12:10pm B:\Powers\Projects\SharePoint\Sahalee Way Corridor Improvem - Doc\CADD\IE\Inbist\DSGN Plc\dwg Layout Name: DSGN Plot 1



**NO WORK IN KING COUNTY  
UNLESS CLIMBING LANE  
ENHANCEMENT IS SELECTED**



LEGEND	
	CHANNELIZATION
	CURB/DRIVEWAY/EDGE OF SHOULDER
	SIDEWALK
	RETAINING WALL
	RIGHT-OF-WAY
	PLANTER STRIP
	SIDEWALK



No.	Date	Revision	By	Appr.

**Perteet**  
 425-252-7700 | 1-800-615-9900  
 2707 Colby Avenue, Suite 900  
 Everett, Washington 98201

Drawn By	Date	SCALE
BMP	9/22/15	Horiz 1"=100'
Designed By	9/22/15	Vert NONE
BMP	9/22/15	Project Number
Checked By	9/22/15	
JAT		
Approved By		

CITY OF SAMMAMISH  
 SAHALEE WAY CORRIDOR WIDENING  
 3-LANE BASE DESIGN

Drawing No.	
Sheet No.	1
of Total	3

MATCHLINE - SEE 3-LANE BASE DESIGN SHEET 2